

Clinical, Medical & Diagnostic Products

Multiple Touchdown PCR (MT-PCR): A New Application of PCR for Better Precision and Stability

Jeffrey Lai, Blue-Ray Biotech. Email: marketing@blue-raybio.com

What is MT-PCR?

Polymerase chain reaction, or PCR, has been in use for nearly 30 years and is in use in all kinds of biochemical and medical laboratories. However, the most overwhelming problem that arises in PCR is the amplification of non-target DNA which can cause all kinds of trouble, not the least being false positive results. Fortunately PCR techniques have constantly improved over the years and a new PCR technique - Multiple Touchdown PCR (MT-PCR) has been developed. MT-PCR combines features of both multiple PCR and touchdown PCR. Several primers are used to test multiple DNA targets in one PCR experiment. The annealing temperature is reduced from an original set point by 0.5~1°C for each cycle until the best annealing temperature is reached.

MT-PCR, which was presented in a new study in 2016 [1], was developed for the detection of resistance genes. MT-PCR successfully identifies several different target bacterial DNAs, it also prevents the reaction from amplifying non-target DNA and consequent false positive results.

How does MT-PCR solve the issue of multiple PCR?

In a regular PCR experiment the target is a single DNA template and a specific primer will extend the template in 20 reaction cycles. Much time can be saved by using multiple primers and target DNAs in one reaction where we can extend several target DNAs in a single PCR at the same time [2].

However, the use of multiple PCR has a serious disadvantage, it is not easy to avoid cross-amplification of non-target DNA in a mixture of primers and DNAs. Therefore we have to select the specific target DNAs in advance before we do the multiple PCR. Only target DNAs with different length of DNA pairs are selected for multiple PCR.

Although multiple PCR saves time, it still cannot prevent errors caused by the cross amplification of non-target DNA. That is why we need MT-PCR. The big difference between MT-PCR and multiple PCR is the annealing temperature. In MT-PCR this is decreased with each cycle. The first cycle (initial) annealing temperature is set 3~5°C higher than the expected temperature. Generally the higher the annealing temperature, the better the matching of the primers and templates. A slow decrease in annealing temperature makes PCR more efficient.

The precise and steady control of temperature is vital

The researchers of this MT-PCR study successfully identified 5 target DNAs, *mecA*, *bla_{SHV}*, *bla_{CTX-M}*, *bla_{TEM}*, and *bla_{OXA}* in blood culture bottles and spike blood bottles, see Figure 1. At the same time, there was no cross-amplification and no false positive results. (Figure 2) In the experiment, the initial annealing temperature set on the thermal cycler was 66°C for 30 seconds. Researchers continued running the reaction for 20 cycles, but for each cycle the annealing temperature was lowered by 0.5°C. The precision and stability of temperature control is essential.

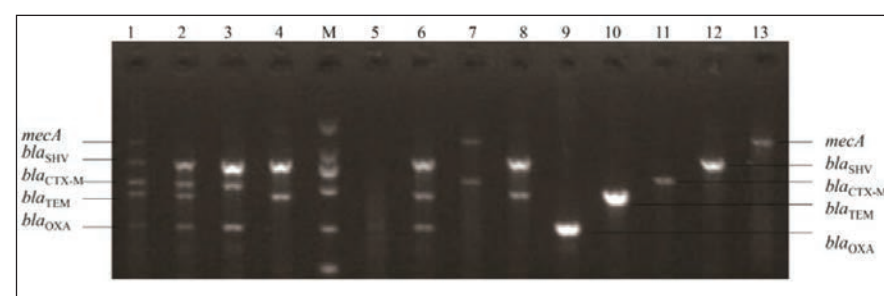


Figure 1. The MT-PCR result of samples from 12 spiked blood culture bottles. No 9~No. 13 are the control groups for the target genes. No.1~No.8 showed clear expression for the target genes in MT-PCR array without other cross-amplification.

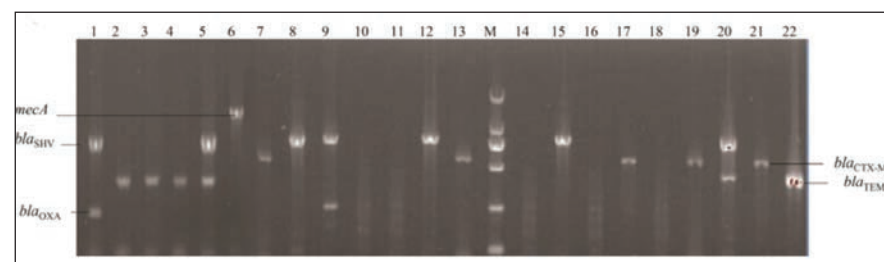


Figure 2. The result of samples from 33 positive blood culture bottles in 4h MT-PCR array. The target genes are expressed clearly without non-target gene expression.

In the study, the target bacterial DNAs held genes for multiple antibiotic resistance. Patients infected by those bacteria need to be given the correct antibiotic treatment without delay or sepsis can result in serious consequences. This work proved that MT-PCR could quickly identify the bacteria involved.

Conclusion

MT-PCR can not only quickly identify the genes of several target bacteria in the samples, but also cross-amplification for non-target DNA can also be avoided. False positive results are remarkably fewer than before and the process is of great value for both clinical research and diagnostics. We expect there to be many more MT-PCR applications in the near future. It is also very important to choose a good thermal cycler for the best results from PCR.

References

1. Ming-Yi W, Jian-Li G, Ying-Jian C, Yu S, Mei S, Hai-Zhu L and Cheng-Kin H. Direct Detection of *mecA*, *bla_{SHV}*, *bla_{CTX-M}*, *bla_{TEM}*, and *bla_{OXA}* Genes from Positive Blood Culture Bottles by Multiple-touchdown PCR Assay.
2. Henegariu O, Heerema N A, Dlouhy, S R, Vance, G H and Vogt, P H (1997) Multiplex PCR: critical parameters and step-by-step protocol. *Biotechniques* 23, 504-511.



Read, Share and Comment on this Article, visit: www.labmate-online.com/article

The Spotlight could be on you!

Check out our Media Information Pack for further details and send your Press Releases to pr@intlabmate.com